

Adaptive Employee Experience (AEE) Login Instructions

IMPORTANT

The URL for the Adaptive Employee Experience (AEE) has changed

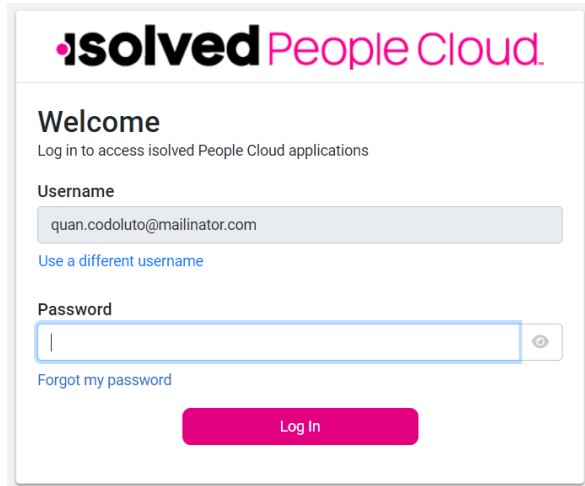
- The new URL is: <https://aee.myisolved.com>
- Remember to save the new URL in your browser

❑ STEP 1

1. Login URL: <https://aee.myisolved.com>

Note: You will be redirected to the Identity server to log into isolved People Cloud. When you have successfully completed the login process, you will be redirected back to aee.myisolved.com. **Please DO NOT bookmark the Identity URL.**

2. Enter your Username and click **Next**.
3. Enter your Password and click **Log In**



isolved People Cloud.

Welcome
Log in to access isolved People Cloud applications

Username
quan.codoluto@mailinator.com
[Use a different username](#)

Password

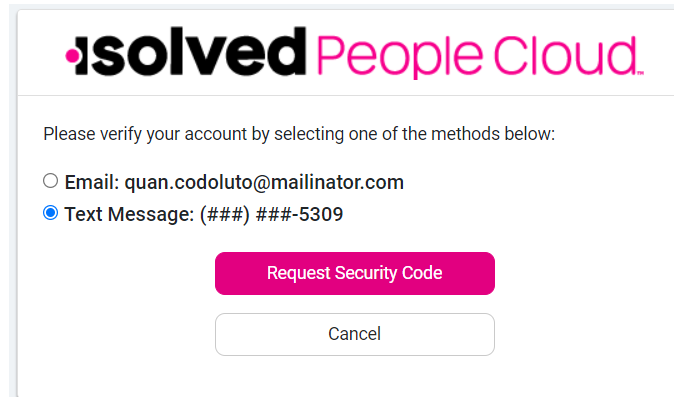
[Forgot my password](#)

Log In

❑ STEP 2

1. Select a method to receive your security code and click **Request Security Code**

Note: If the option to receive a code by text is not available and you want that option for future logins, see the Resources section at the end of this document for the steps to add a mobile number to your isolved account.



isolved People Cloud.

Please verify your account by selecting one of the methods below:

Email: quan.codoluto@mailinator.com

Text Message: (###) ###-5309

Request Security Code

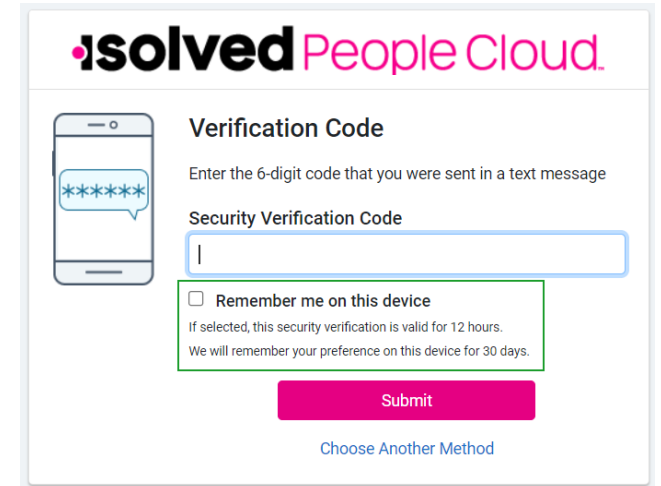
Cancel

❑ STEP 3

1. Enter the Security Verification Code you received and click **Submit**

Note: Select **Remember me on this device** to bypass providing multi-factor authentication for 12 hours.

Note: If you want to change the method you receive your code, click the **Choose Another Method** link and you will return to the prior page.



isolved People Cloud.

Verification Code
Enter the 6-digit code that you were sent in a text message

Security Verification Code

Remember me on this device
If selected, this security verification is valid for 12 hours.
We will remember your preference on this device for 30 days.

Submit

[Choose Another Method](#)

Adaptive Employee Experience (AEE) Login Instructions

IMPORTANT

You DO NOT have to set up passwordless access or an authenticator app during the login process. You can set these options on the isolated My Account page at any time.

Note: If you choose to set up passwordless access or an authenticator app, please work with your internal IT contact if you require assistance. **Insperty does not support troubleshooting issues related to configuring or using passwordless access or third-party authenticator apps.**

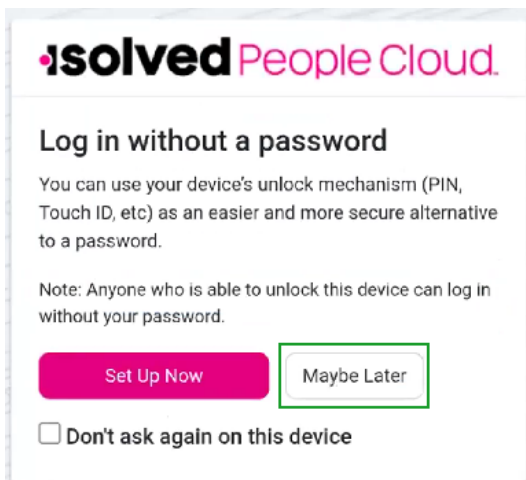
STEP 4

1. To bypass this screen and continue logging into Adaptive, click **Maybe Later**

Note: To stop this screen from showing up with each login, select **Don't ask again on this device** before clicking **Maybe Later**.

2. To configure passwordless access during the login process, click **Set Up Now**.
- 3.

Note: If set up passwordless access, you will not be presented with the authenticator app screen in the next step.

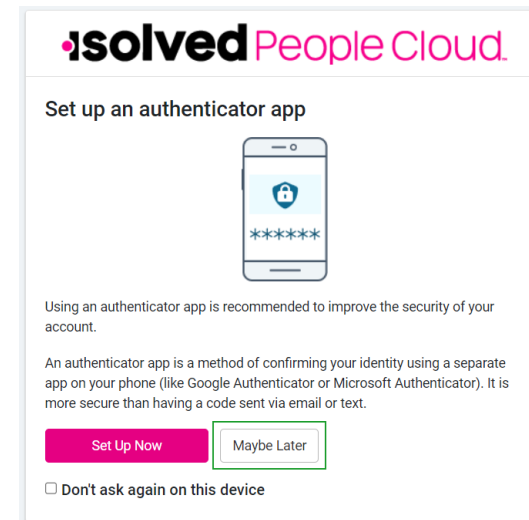


STEP 5

1. To bypass this screen and continue logging into Adaptive, click **Maybe Later**

Note: To stop this screen from showing up with each login, select **Don't ask again on this device** before clicking **Maybe Later**.

2. To configure an authentication app during the login process, click **Set Up Now**



Isolved Security Enhancements

- The following is a list of resources available

isolved University Video Instruction

- [Logging into Adaptive with multi-factor authentication*](#)

isolved University Instruction Guides

- [Multi-factor Authentication Login Instructions*](#)
- [Updating Mobile Number in Adaptive Employee Experience \(AEE\)*](#)

isolved Security Enhancements FAQs

- [isolved Security Enhancement FAQs for Supervisors, Managers, and Employees](#)

*These resources require access to isolved University. You will need to log in to view the content. Read [Registering for isolved University](#) if you need help signing up.